

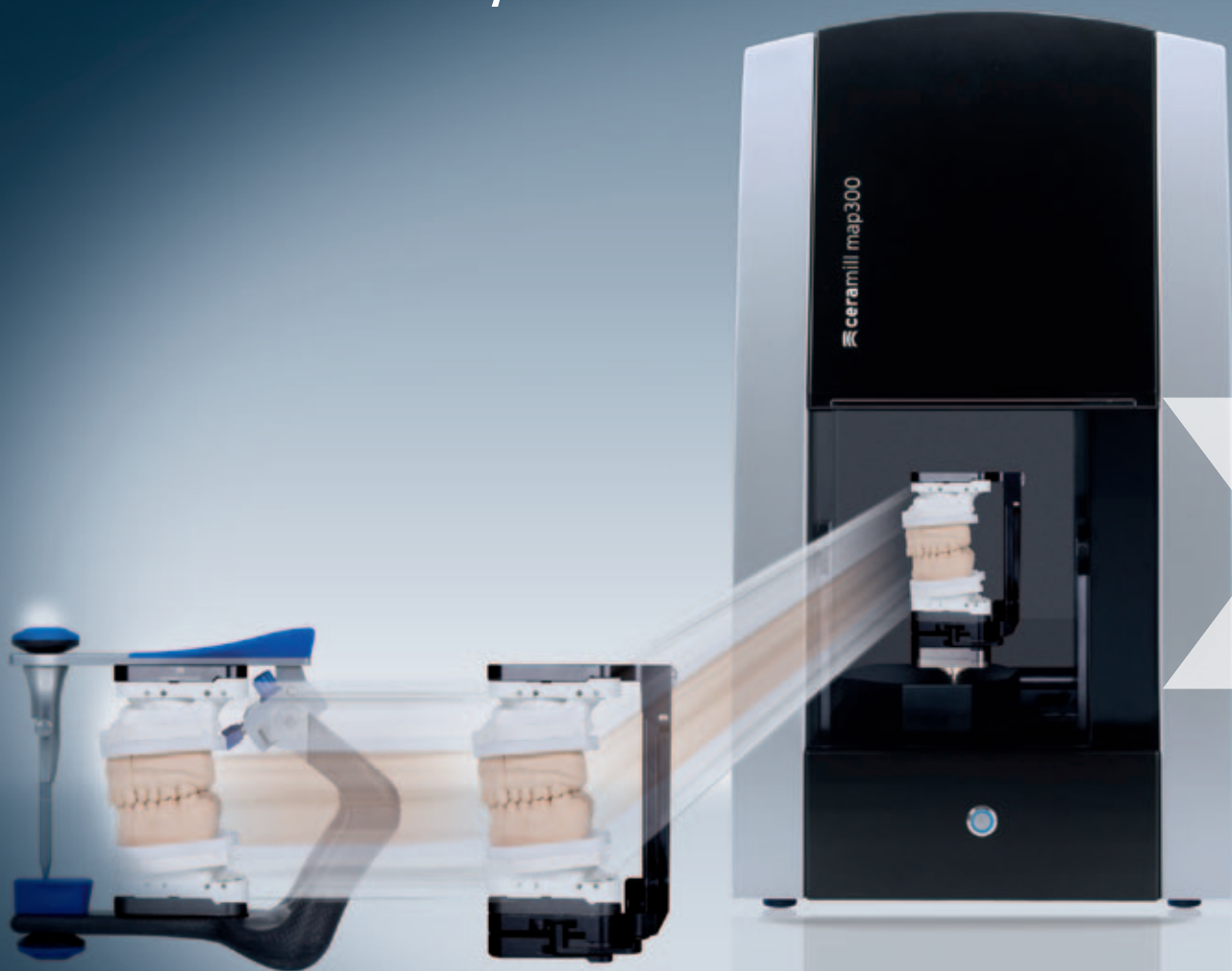
Pure Instinct.

 **ceramill**



**AMANNGIRRBACH**

Looking for simplicity,  
precision and affordability?  
We understand your needs!



In-house CAD-CAM at  
affordable prices



Simple and user-friendly  
operation

 **ceramill**



Precision from start to finish for the perfect fit

  
**AMANN GIRRBACH**

# Framework fabrication which adapts to your requirements.



## + CERAMILL MALL YOUR + POINTS

- \_Redeems expenditure in record time thanks to the massive savings achieved per unit
- \_The fabrication methods can be combined as required and a wide range of materials used
- \_Efficient and easily controllable workflow (Ceramill Mind Workflow)
- \_System matched throughout the entire fabrication process
- \_System concept for hardware and software components safeguarded in the future
- \_Compatible with open scanner systems (Dental Wings®, 3Shape®)
- \_DFP - The CAD/CAM based method for interference-free prosthetic restorations



QR-Code

**Framework management digital leaflet**  
(at: [www.amanngirrbach.com](http://www.amanngirrbach.com) or download directly onto smartphone, tablet or PC)



## CERAMILL AND DFP

The method which leads to success

**DFP** "Digital Functional Prosthetics" describes the end product in the Ceramill fabrication chain - the functional, interference-free prosthetic restoration fabricated digitally in the laboratory.

The Ceramill Artex® - the virtual Artex® CR articulator - enables highly precise occlusal surfaces to be designed also using digital techniques. The right method - easily learned in every laboratory.

- \_Protects residual dentition
- \_Avoids chipping and guarantee cases
- \_Retains the aesthetic and functional parameters



QR-Code

For more information about DFP, please refer to our new brochure "Digital, but without loss of function."  
(at: [www.amanngirrbach.com](http://www.amanngirrbach.com) or download directly onto smartphone, tablet or PC)



Ceramill Mall puts the creative work back into your laboratory.



CAD-CAM production in your laboratory has never been so easy & affordable.

For further details, please contact your Amann Girrbach product specialist.

**PROCESSING TIMES**

(Average based on single zirconia coping)



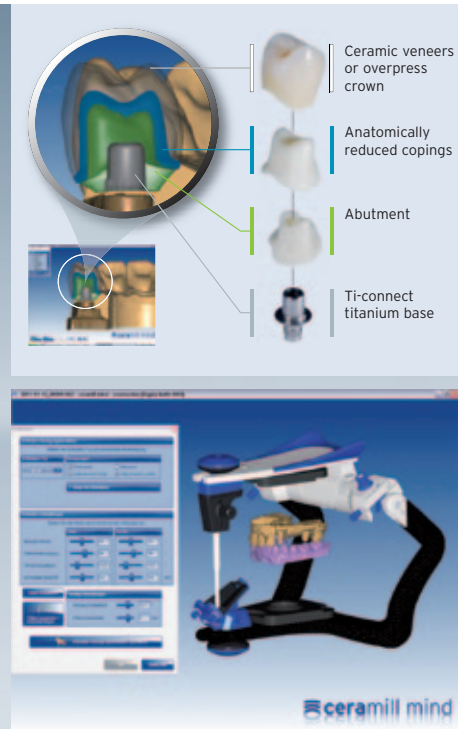


## ceramill map300

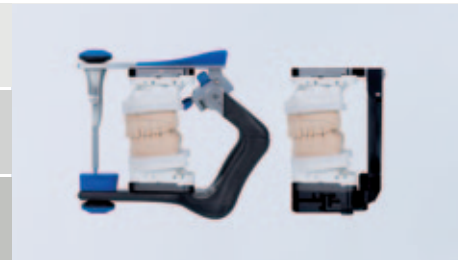
The high performance model scanner with connection to virtual articulator

## ceramill mind

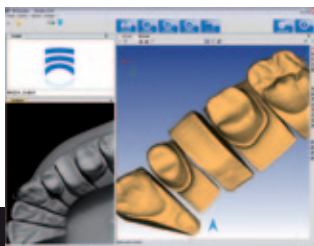
The brain of the system:  
The construction software



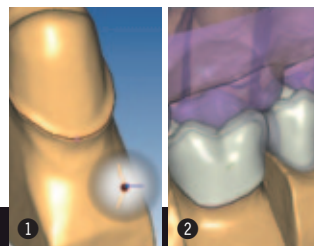
<p>_ Artex® CR synchable with virtual articulator</p>	<p>_ Economizing time through intuitive dental technical workflow</p>
<p>_ Fully automatic scanning of bridges up to 14 units</p>	<p>_ Large functional scope</p>
<p>_ Unlimited indication width</p>	<p>_ Automatic preparation margin recognition _ Comprehensive indication range</p>



Ceramill Cockpit: digital control panel for the overall Ceramill production process, selection of indication mode.



Scanning of the model via high precision strip-light projection.



1 Automatic recognition of the preparation margin.  
2 Calculation of the anatomically reduced framework based on the full anatomic construction.



Selection of material and manufacturing techniques, data upload to Ceramill Motion or Ceramill M-Center.

30 seconds

60 seconds

120 seconds

30 seconds



## ceramill match 2

Nesting software and 5-axis, simultaneous CAM software

**NEW**

## ceramill motion

Manageable, durable, accurate and versatile - The inhouse CAM milling unit

### ceramill m-plant

Production of individual zirconia/titanium abutments with Ceramill. Available as software-upgrade for Ceramill Mind.

**NEW:** Titanium bases for the most common implant-systems.  
www.amanngirrbach.com

### ceramill artex®

Virtual articulator - the link between manual & digital dental technology. Available as software-upgrade for Ceramill Mind.

Find detailed product info and demo video at  
www.amanngirrbach.com

Ceramill transfer kit for easy transfer of the patient situation (model) to the scanner, without loss of precision and articulator settings.



\_Easier, quicker nesting process  
\_Easy blank management

\_Amortisation in record time

\_Quick milling times due to intelligent machine control - with the in-house developed Speed-Boost technology

\_Wide spectrum of indications regarding materials and size

\_Automatically placed auxiliary bar as sinter stabiliser for large zirconia bridges

\_Superior CNC technology for high productivity



Automatic tool mount and change, as well as tool detection and calibration.



5-axis operation (including simultaneous) with sufficiently large rotation path for future indications (models, full-denture prosthetics etc.).

**12 minutes\***

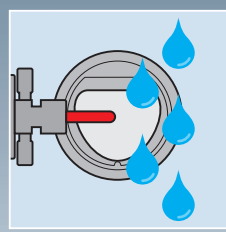
\* (ZI single copings)



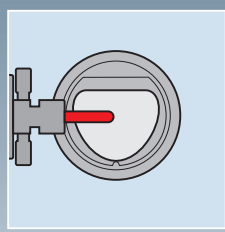
# ceramill motion 2

Wet and dry machining in a compact unit

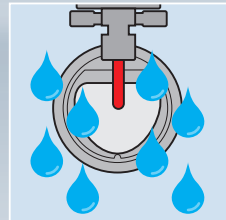
**NEW**



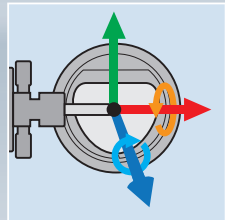
**WET MILLING**  
Optimal for plastics



**DRY MILLING**  
Optimal for zirconia and wax



**WET GRINDING**  
Optimal for glass ceramic



**5-AXIS SIMULTANEOUS**  
Unlimited indication range

Wet/dry milling/grinding - Material-appropriate machining for all types of material: zirconia, acrylic, glass-ceramic, wax

Unlimited range of indications, also upgradable for future indications (full-denture prosthetics, splints, models etc.)

5-AXIS-Simultaneous Technology - future proof and affordable

Download directly onto smartphone, tablet or PC or at: [www.amanngirrbach.com](http://www.amanngirrbach.com)



Highly precise and durable Jäger spindle with a true-running accuracy of < 0,004mm. [www.alfredjaeger.de](http://www.alfredjaeger.de)



**Ceramill Coolstream** - coolant lubricant preparation integrated in the trolley supports the Motion 2 and can also incorporate the Airstream extraction for dry processing.



**VITABLOCS® Mark II**  
**VITABLOCS® TriLuxe forte**  
Optionally available: Starterkit VITABLOCS for Ceramill Motion 2 including blanks, diamond-grinder and workpiece holder.



Ceramill Motion 2 Video



Ceramill Motion 2 brochure

QR-Code

# Material diversity of Ceramill



## ceramill zolid

Monolithic zirconia - for fully anatomical restorations, high translucency and long-term stability.



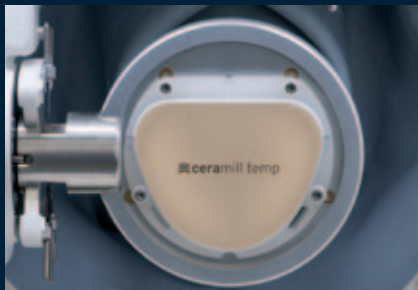
## ceramill zi

Zirconia of the highest quality - optimal for framework fabrication.



## ceramill wax

Burns out without residue - easy, quick to process.



## ceramill temp

Coloured PMMA - for try-ins, temporary restorations etc.



## ceramill pmma

Resin that burns out without residue - used for the casting technique and framework try-in.



**VITABLOCS® Mark II & TriLuxe forte**  
for  ceramill motion 2

**Coming soon**

### For completion of the material and indication spectrum:

## ceramill m-center

The manufacturing centre for titanium, glass porcelain and composite indications with rapid, reliable processing times. Now located at the company headquarters to ensure an even more efficient service.



Our entire range of products is shown on our website:

**[www.amangirrbach.com](http://www.amangirrbach.com)** where you can download our catalog.



**AMANGIRRBACH**